

# wePACK 7000



## Product details

- Safe, sustainable, powerful
- Possible applications: MAP, vacuum, skin, folded or multi-layered pack
- Can be fully integrated in to Weber line solutions

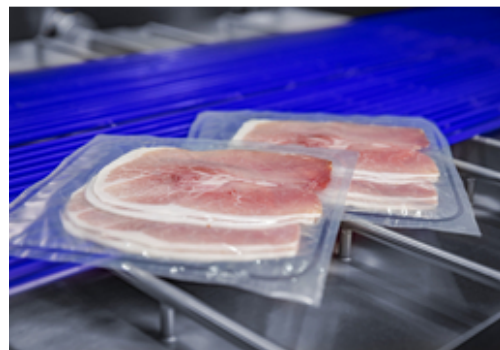
[View online](#)



## wePACK 7000: Thermoforming packaging machine for the highest output ranges.

For anyone who wants to package sliced products, piece goods, or other fresh food products safely and sustainably at the highest performance level, the wePACK 7000 is the perfect choice. The Weber thermoforming packaging machine sets standards in output and quality, and is particularly energy-efficient thanks to the use of modern servo technology. The servo-drive technology allows for complete control of the entire cycle, ensuring absolute process reliability and the shortest cycle time possible.

- The lifting system with servo drive has been designed to meet the particular needs of the food industry with unmatched speed for maximum output and featuring a robust, hygienic design with 100% stainless steel.
- The cross punches run slower in closed-loop operation at start and end cycles in order to minimize wear.
- Camera-supported checking of the actually stretched top film roll against the stored recipe data to avoid the loss of film and product, and increase production reliability
- Web edge control of bottom film unwinding: film deviations can be corrected smoothly and accurately by detecting the tendency of lane position deviations
- Integrated cut for peel corners
- Quick-change roller shear cutting system: automatic adjustment of the ideal contact pressure to reduce downtimes
- Integration of Weber PaperTech technology for optimized processing of fiber-based films
- Continuous data flow across the entire line including standardized operatingsystem



# Technical Data

## Machine

Machine length	modular; customized
Machine width	up to 14500mm
Loading area	customized
Loading area knee free	upon Request
Bottom film width	up to 660 mm
Top film width	up to 660 mm
Max. index length	up to 1.500 mm
Max. pack depth	up to 80 mm without / 65 mm with top lift; up to 180 mm without / 165 mm with top lift
Tool top lift forming / sealing	Yes / Yes

## Performance

Cycle Speed	approx. 4 - 17 cycles/min
Film material thickness	up to 1.200 mic.
Top film reel Max diam.	1x or 2x 500 mm; 1x 1.000 mm
Bottom film reel Max diam.	1x or 2x 500 mm; 1x 1.000 mm jumbo (800 mm for belt loader)
Reel core diam.	3" or 6" cores

## Applications



Air



Vacuum



Modified  
Atmosphere



Shrink



Skinpack



PaperTech

Weber means: service across the board.



#### Weber Upgrades make it possible.

##### New tasks, old machines?

The tasks and challenges in production have grown? To meet this, we offer a wide variety of upgrades for existing lines that are optimally suited to new requirements: whether retrofitting individual components to optimize production or automating existing lines to raise hygiene standards. This is sustainable and economical - and also allows you to stay up-to-date and grow with a manageable investment.



#### Weber Guardian.

##### A safe plan for your production.

Only those who listen can understand. And those who understand can act. With our Weber Guardian program, we harmonize people, machines, and processes to get the most out of production. From preventive maintenance and inspection through targeted personnel development to production support and optimization.



#### Weber Portal.

##### Networked thinking, handling together.

You will find everything about your Weber equipment bundled in your personal Weber Portal. Compact, individual and interactive. From your customer profile and that of your machines to e-learning on your setup as well as convenient spare parts ordering and service offers. Are you already registered?

We are looking forward to hearing from you.



Weber Inc. U.S. Sales

[Simon.Langhorn@weberweb.com](mailto:Simon.Langhorn@weberweb.com)

**Weber Food Technology GmbH**

Günther-Weber-Straße 3 | 35236 Breidenbach | Germany

Phone: +49 6465 918 - 0 | Fax: +49 6465 918 - 11 00

[info@weberweb.com](mailto:info@weberweb.com) | [www.weberweb.com](http://www.weberweb.com)

**weber**

## Legal notice

This document was generated automatically on 04/29/2024. All information is non-binding. We reserve the right to make changes in the interest of technical progress. For the latest information on this product, please visit:

<https://us.weberweb.com/portfolio/packaging/wepack-7000/?ref=brochure-qr>